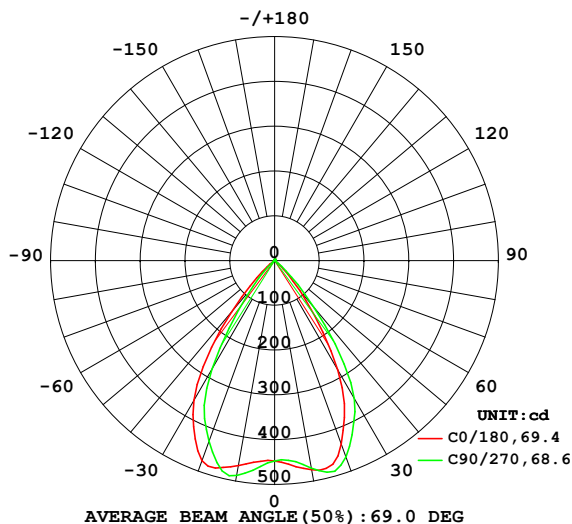


## LUMINAIRE PHOTOMETRIC TEST REPORT

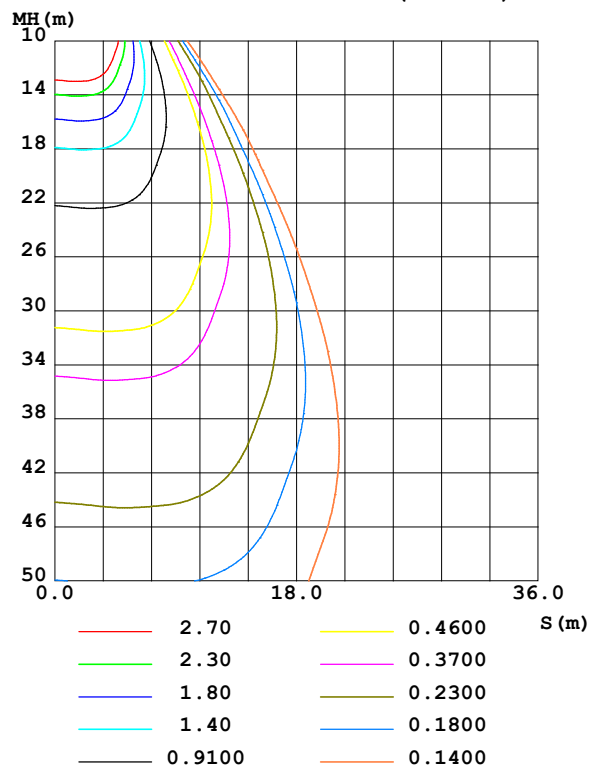
Test:U:220.75V I:0.0488A P:7.9773W PF:0.7406 Freq:49.99Hz UTHDi:0.00% ITHDi:0.00% KDisp:0 Lamp Flux:570.41x1 lm		
NAME: DL6104 3000K RA90 80D	TYPE:	WEIGHT:
SPEC.:	DIM.:	SERIAL No.:
MFR.: VJC lighting	SUR.: 29*29*4	Shielding Angle:

DATA OF LAMP		PHOTOMETRIC DATA Eff: 71.50 lm/W			
MODEL	DL6104 3000K RA90 80D	I <sub>max</sub> (cd)	503.1	S/MH(C0/180)	1.07
NOMINAL POWER(W)	8	LOR(%)	100.0	S/MH(C90/270)	0.94
RATED VOLTAGE(V)	220	TOTAL FLUX(lm)	570.41	η UP,DN(C0-180)	0.4,52.2
NOMINAL FLUX(lm)	570.41	CIE CLASS	DIRECT	η UP,DN(C180-360)	0.5,47.0
LAMPS INSIDE	1	η up (%)	0.9	CIBSE SHR NOM	1.00
TEST VOLTAGE(V)	220	η down (%)	99.1	CIBSE SHR MAX	1.10

LUMINOUS INTENSITY DISTRIBUTION DIAGRAM



C0 PLANE ISOLUX DIAGRAM (UNIT:lx)



C Range: 0 - 360DEG  
C Interval: 22.5DEG  
Test Speed: HIGH  
Temperature: 25.3℃  
Operators: 001  
Test Date: 2025-04-25

γ Range: 0 - 180DEG  
γ Interval: 2.0DEG  
Test System: EVERFINE GO-2000B\_V1 SYSTEM V2.00.456  
Humidity: 65.0%  
Test Distance: 8.370m [K=1.0000]  
Remarks:

## ZONAL FLUX DIAGRAM

## ZONAL FLUX DIAGRAM:

$\gamma$	C0	C45	C90	C135	C180	C225	C270	C315	$\gamma$	$\Phi$ zone	$\Phi$ total	%lum, lamp
10	473.8	475.0	470.2	461.8	464.4	481.0	486.7	490.2	0- 10	44.17	44.17	7.74,7.74
20	435.9	492.8	466.0	501.8	475.2	479.3	429.1	465.8	10- 20	136.6	180.8	31.7,31.7
30	281.6	351.6	356.5	396.0	360.3	348.5	281.2	299.8	20- 30	187.4	368.1	64.5,64.5
40	89.20	146.3	138.0	203.2	149.3	134.2	74.63	90.40	30- 40	143.6	511.7	89.7,89.7
50	8.529	17.88	21.07	32.42	22.51	15.82	6.671	8.710	40- 50	46.00	557.7	97.8,97.8
60	1.338	2.327	2.478	3.429	2.969	2.327	1.350	1.561	50- 60	5.957	563.7	98.8,98.8
70	0.5007	0.5273	0.6252	0.7792	0.8780	0.5870	0.5548	0.4246	60- 70	1.150	564.8	99,99
80	0.1247	0.1971	0.2725	0.3004	0.3200	0.1853	0.1468	0.0940	70- 80	0.4196	565.3	99.1,99.1
90	0	0.0000	0.0086	0.0197	0	0	0	0	80- 90	0.0813	565.3	99.1,99.1
100	0	0	0	0	0	0.0001	0.0056	0.0223	90-100	0.0005	565.3	99.1,99.1
110	0.1737	0.1189	0.0636	0.0720	0.0969	0.1527	0.1780	0.2225	100-110	0.0516	565.4	99.1,99.1
120	0.5631	0.4623	0.3744	0.3773	0.4039	0.4965	0.5586	0.6116	110-120	0.2893	565.7	99.2,99.2
130	1.088	0.9499	0.8684	0.8493	0.9070	0.9817	1.092	1.123	120-130	0.6462	566.3	99.3,99.3
140	1.621	1.485	1.429	1.385	1.468	1.533	1.650	1.651	130-140	0.9672	567.3	99.5,99.5
150	2.047	1.942	1.918	1.863	1.962	2.007	2.114	2.095	140-150	1.106	568.4	99.6,99.6
160	2.376	2.305	2.290	2.233	2.319	2.356	2.463	2.445	150-160	1.002	569.4	99.8,99.8
170	2.813	2.743	2.721	2.716	2.739	2.808	2.871	2.889	160-170	0.7191	570.1	100,100
180	3.081	3.096	3.102	3.133	3.081	3.101	3.107	3.136	170-180	0.2801	570.4	100,100
DEG	LUMINOUS INTENSITY:cd									UNIT:lm		

Conical surface Flux(90deg): 548.1 lm

%lum = 96.1%

%lamp = 96.1%

Conical surface Flux(130deg): 564.55 lm

%lum = 99.0%

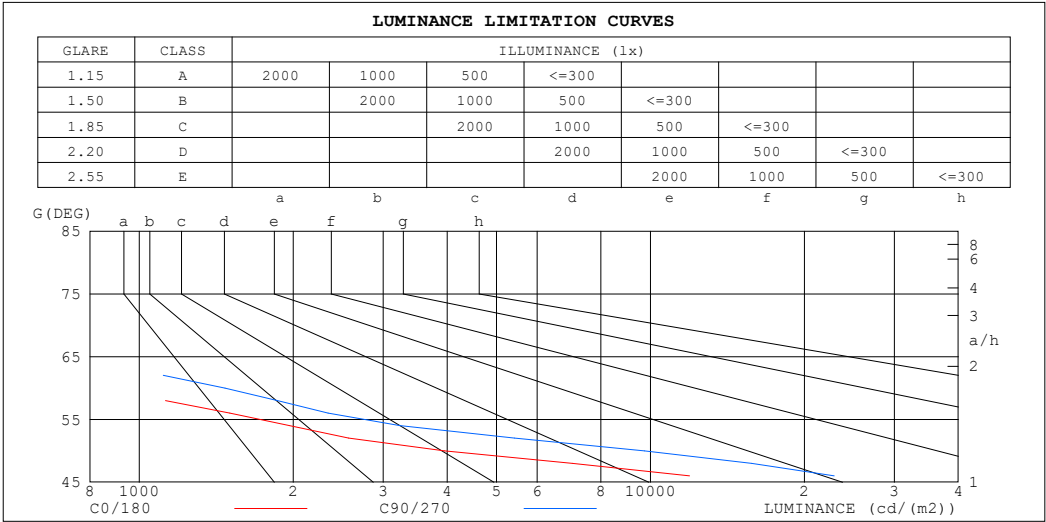
%lamp = 99.0%

C Range: 0 - 360DEG  
 C Interval: 22.5DEG  
 Test Speed: HIGH  
 Temperature:25.3℃  
 Operators:001  
 Test Date:2025-04-25

$\gamma$  Range: 0 - 180DEG  
 $\gamma$  Interval: 2.0DEG  
 Test System:EVERFINE GO-2000B\_V1 SYSTEM V2.00.456  
 Humidity:65.0%  
 Test Distance:8.370m [K=1.0000]  
 Remarks:

LUMINANCE LIMITATION CURVES

Test:U:220.75V I:0.0488A P:7.9773W PF:0.7406 Freq:49.99Hz		
UTHDi:0.00% ITHDi:0.00% KDisp:0 Lamp Flux:570.41x1 lm		
NAME: DL6104 3000K RA90 80D	TYPE:	WEIGHT:
SPEC.:	DIM.:	SERIAL No.:
MFR.: VJC lighting	SUR.: 29*29*4	Shielding Angle:



LUMINANCE cd/(m2)		
G (DEG)	C0/180	C90/270
85	86	512
80	214	466
75	383	548
70	437	543
65	559	828
60	798	1472
55	2013	3313
50	3958	9729
45	18430	31648

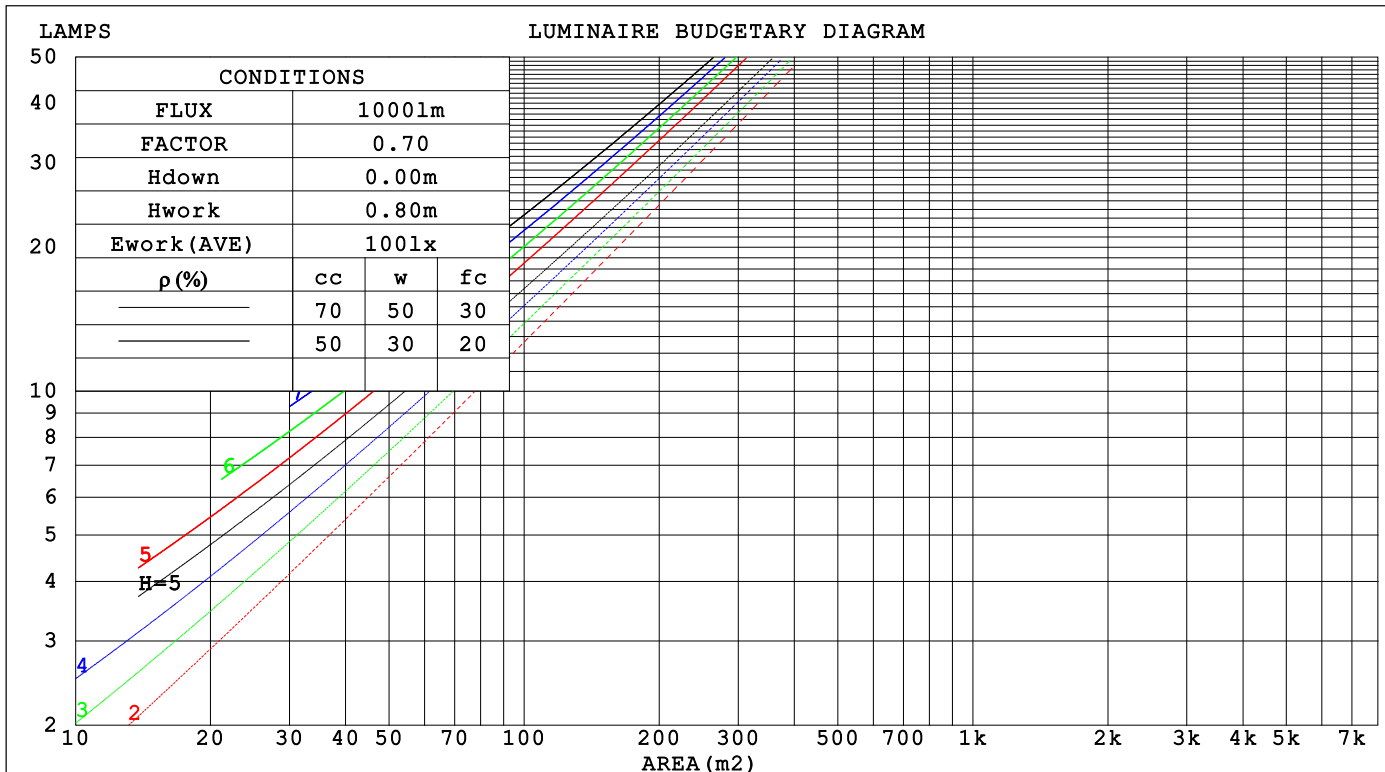
C Range: 0 - 360DEG  
C Interval: 22.5DEG  
Test Speed: HIGH  
Temperature:25.3℃  
Operators:001  
Test Date:2025-04-25

γ Range: 0 - 180DEG  
γ Interval: 2.0DEG  
Test System:EVERFINE GO-2000B\_V1 SYSTEM V2.00.456  
Humidity:65.0%  
Test Distance:8.370m [K=1.0000]  
Remarks:

## CU AND LUMINAIRE BUDGETARY ESTIMATE DIAGRAM

Test:U:220.75V I:0.0488A P:7.9773W PF:0.7406 Freq:49.99Hz		
UTHDi:0.00% ITHDi:0.00% KDisp:0 Lamp Flux:570.41x1 lm		
NAME: DL6104 3000K RA90 80D	TYPE:	WEIGHT:
SPEC.:	DIM.:	SERIAL No.:
MFR.: VJC lighting	SUR.: 29*29*4	Shielding Angle:

pcc	80%			70%			50%			30%			10%			0
pw	50%	30%	10%	50%	30%	10%	50%	30%	10%	50%	30%	10%	50%	30%	10%	0
pfc	20%			20%			20%			20%			20%			0
RCR	RCR:Room Cavity Ratio Coefficients of Utilization(CU)															
0.0	1.19	1.19	1.19	1.16	1.16	1.16	1.11	1.11	1.11	1.06	1.06	1.06	1.01	1.01	1.01	.99
1.0	1.10	1.08	1.05	1.08	1.06	1.04	1.04	1.02	1.00	.00	.98	.97	.96	.95	.94	.92
2.0	1.02	.98	.94	1.00	.96	.93	.97	.94	.91	.94	.91	.89	.91	.89	.87	.85
3.0	.95	.89	.85	.93	.88	.85	.90	.86	.83	.88	.85	.82	.85	.83	.80	.79
4.0	.88	.82	.78	.87	.81	.77	.84	.80	.76	.82	.78	.75	.80	.77	.74	.73
5.0	.82	.76	.71	.81	.75	.71	.79	.74	.70	.77	.73	.69	.75	.72	.69	.67
6.0	.76	.70	.66	.76	.70	.65	.74	.69	.65	.72	.68	.64	.71	.67	.64	.62
7.0	.71	.65	.61	.71	.65	.60	.69	.64	.60	.68	.63	.60	.67	.62	.59	.58
8.0	.67	.61	.56	.66	.60	.56	.65	.60	.56	.64	.59	.55	.63	.58	.55	.54
9.0	.63	.57	.52	.62	.56	.52	.61	.56	.52	.60	.55	.52	.59	.55	.52	.50
10.0	.59	.53	.49	.58	.53	.49	.58	.52	.49	.57	.52	.48	.56	.51	.48	.47



C Range: 0 - 360DEG  
C Interval: 22.5DEG  
Test Speed: HIGH  
Temperature:25.3℃  
Operators:001  
Test Date:2025-04-25

γ Range: 0 - 180DEG  
γ Interval: 2.0DEG  
Test System:EVERFINE GO-2000B\_V1 SYSTEM V2.00.456  
Humidity:65.0%  
Test Distance:8.370m [K=1.0000]  
Remarks:

### WEC AND CCEC

Test:U:220.75V I:0.0488A P:7.9773W PF:0.7406 Freq:49.99Hz			UTHDi:0.00% ITHDi:0.00% KDisp:0			Lamp Flux:570.41x1 lm		
NAME: DL6104 3000K RA90 80D			TYPE:			WEIGHT:		
SPEC.:			DIM.:			SERIAL No.:		
MFR.: VJC lighting			SUR.: 29*29*4			Shielding Angle:		

pcc	80%			70%			50%			30%			10%			0	
pw	50%	30%	10%	50%	30%	10%	50%	30%	10%	50%	30%	10%	50%	30%	10%	0	
pfc	20%			20%			20%			20%			20%			0	
RCR	RCR:Room Cavity Ratio						Wall Exitance Coefficients(WEC)										
0.0																	
1.0	.185	.105	.033	.178	.101	.032	.165	.094	.030	.153	.088	.028	.141	.082	.026		
2.0	.178	.098	.030	.172	.095	.029	.161	.090	.028	.151	.085	.026	.141	.080	.025		
3.0	.170	.091	.027	.165	.089	.027	.156	.084	.026	.147	.081	.025	.139	.077	.024		
4.0	.163	.085	.025	.158	.083	.025	.150	.080	.024	.142	.076	.023	.135	.073	.022		
5.0	.156	.079	.023	.152	.078	.023	.144	.075	.022	.138	.073	.022	.131	.070	.021		
6.0	.149	.075	.021	.145	.073	.021	.139	.071	.021	.133	.069	.020	.127	.067	.020		
7.0	.142	.070	.020	.139	.069	.020	.134	.068	.019	.128	.066	.019	.123	.064	.019		
8.0	.136	.067	.019	.134	.066	.019	.128	.064	.018	.124	.063	.018	.119	.061	.018		
9.0	.131	.063	.018	.128	.063	.018	.124	.061	.017	.119	.060	.017	.115	.058	.017		
10.0	.125	.060	.017	.123	.060	.017	.119	.058	.016	.115	.057	.016	.111	.056	.016		

pcc	80%			70%			50%			30%			10%			0	
pw	50%	30%	10%	50%	30%	10%	50%	30%	10%	50%	30%	10%	50%	30%	10%	0	
pfc	20%			20%			20%			20%			20%			0	
RCR	RCR:Room Cavity Ratio						Ceiling Cavity Exitance Coefficients (CCEC)										
0.0	.197	.197	.197	.169	.169	.169	.115	.115	.115	.066	.066	.066	.021	.021	.021		
1.0	.178	.164	.151	.153	.141	.130	.104	.097	.090	.060	.056	.052	.019	.018	.017		
2.0	.164	.139	.119	.140	.120	.103	.096	.083	.072	.055	.048	.042	.018	.016	.014		
3.0	.152	.121	.095	.130	.104	.083	.090	.072	.058	.052	.042	.034	.017	.014	.011		
4.0	.143	.106	.078	.122	.092	.068	.084	.064	.048	.049	.037	.028	.016	.012	.009		
5.0	.134	.095	.065	.115	.082	.057	.079	.057	.040	.046	.034	.024	.015	.011	.008		
6.0	.127	.085	.055	.109	.074	.048	.075	.052	.034	.044	.030	.020	.014	.010	.007		
7.0	.121	.078	.048	.104	.068	.042	.072	.047	.030	.042	.028	.018	.014	.009	.006		
8.0	.116	.072	.042	.100	.062	.037	.069	.044	.026	.040	.026	.015	.013	.008	.005		
9.0	.111	.067	.037	.095	.058	.033	.066	.041	.023	.038	.024	.014	.012	.008	.005		
10.0	.106	.063	.034	.092	.054	.029	.064	.038	.021	.037	.023	.012	.012	.007	.004		

C Range: 0 - 360DEG  
C Interval: 22.5DEG  
Test Speed: HIGH  
Temperature:25.3℃  
Operators:001  
Test Date:2025-04-25

γ Range: 0 - 180DEG  
γ Interval: 2.0DEG  
Test System:EVERFINE GO-2000B\_V1 SYSTEM V2.00.456  
Humidity:65.0%  
Test Distance:8.370m [K=1.0000]  
Remarks:

UGR(Unified Glare Rating) Table

Test:U:220.75V I:0.0488A P:7.9773W PF:0.7406 Freq:49.99Hz UTHDi:0.00% ITHDi:0.00% KDisp:0 Lamp Flux:570.41x1 lm											
NAME: DL6104 3000K RA90 80D						TYPE:		WEIGHT:			
SPEC.:						DIM.:		SERIAL No.:			
MFR.: VJC lighting						SUR.: 29*29*4		Shielding Angle:			
ceiling/cavity	0.7	0.7	0.5	0.5	0.3	0.7	0.7	0.5	0.5	0.3	
walls	0.5	0.3	0.5	0.3	0.3	0.5	0.3	0.5	0.3	0.3	
working plane	0.2	0.2	0.2	0.2	0.2	0.2	0.2	0.2	0.2	0.2	
Room dimensions		Viewed crosswise					Viewed endwise				
x = 2H y = 2H		21.0	22.0	21.3	22.2	22.4	22.5	23.6	22.8	23.7	23.9
3H		20.8	21.7	21.1	22.0	22.2	22.4	23.3	22.6	23.5	23.7
4H		20.7	21.6	21.0	21.8	22.1	22.3	23.1	22.6	23.4	23.6
6H		20.6	21.5	21.0	21.7	22.0	22.2	23.0	22.5	23.3	23.5
8H		20.6	21.4	20.9	21.6	21.9	22.1	22.9	22.5	23.2	23.5
12H		20.6	21.3	20.9	21.6	21.9	22.1	22.8	22.4	23.1	23.4
4H 2H		20.7	21.6	21.0	21.8	22.1	22.3	23.1	22.6	23.4	23.6
3H		20.6	21.3	20.9	21.6	21.9	22.1	22.8	22.4	23.1	23.4
4H		20.5	21.1	20.8	21.4	21.8	22.0	22.7	22.4	23.0	23.3
6H		20.4	21.0	20.8	21.3	21.7	21.9	22.5	22.3	22.8	23.2
8H		20.3	20.9	20.7	21.2	21.6	21.9	22.4	22.3	22.8	23.2
12H		20.3	20.8	20.7	21.2	21.6	21.8	22.3	22.2	22.7	23.1
8H 4H		20.3	20.9	20.7	21.2	21.6	21.9	22.4	22.3	22.8	23.2
6H		20.2	20.7	20.7	21.1	21.5	21.8	22.2	22.2	22.6	23.0
8H		20.2	20.6	20.6	21.0	21.4	21.7	22.1	22.2	22.5	23.0
12H		20.1	20.4	20.6	20.9	21.4	21.6	22.0	22.1	22.4	22.9
12H 4H		20.3	20.8	20.7	21.2	21.6	21.8	22.3	22.2	22.7	23.1
6H		20.2	20.6	20.6	21.0	21.4	21.7	22.1	22.2	22.5	23.0
8H		20.1	20.4	20.6	20.9	21.4	21.6	22.0	22.1	22.4	22.9
Variations with the observer position at spacings(CIE Pub.117):											
S = 1.0H		+ 2.8 / -16.7					+ 3.1 / -16.4				
1.5H		+ 5.0 / -12.7					+ 5.2 / -13.7				
2.0H		+ 7.0 / -11.9					+ 7.4 / -12.5				

CIE Pub.117, 570.4 lm Total Lamp Luminous Flux Correct (8log(F/F0) = -2.0)  
Area: 0.003364 m2

C Range: 0 - 360DEG  
C Interval: 22.5DEG  
Test Speed: HIGH  
Temperature:25.3℃  
Operators:001  
Test Date:2025-04-25

γ Range: 0 - 180DEG  
γ Interval: 2.0DEG  
Test System:EVERFINE GO-2000B\_V1 SYSTEM V2.00.456  
Humidity:65.0%  
Test Distance:8.370m [K=1.0000]  
Remarks:

### UTILIZATION FACTORS TABLE

Test:U:220.75V I:0.0488A P:7.9773W PF:0.7406 Freq:49.99Hz		
UTHDi:0.00% ITHDi:0.00% KDisp:0 Lamp Flux:570.41x1 lm		
NAME: DL6104 3000K RA90 80D	TYPE:	WEIGHT:
SPEC.:	DIM.:	SERIAL No.:
MFR.: VJC lighting	SUR.: 29*29*4	Shielding Angle:

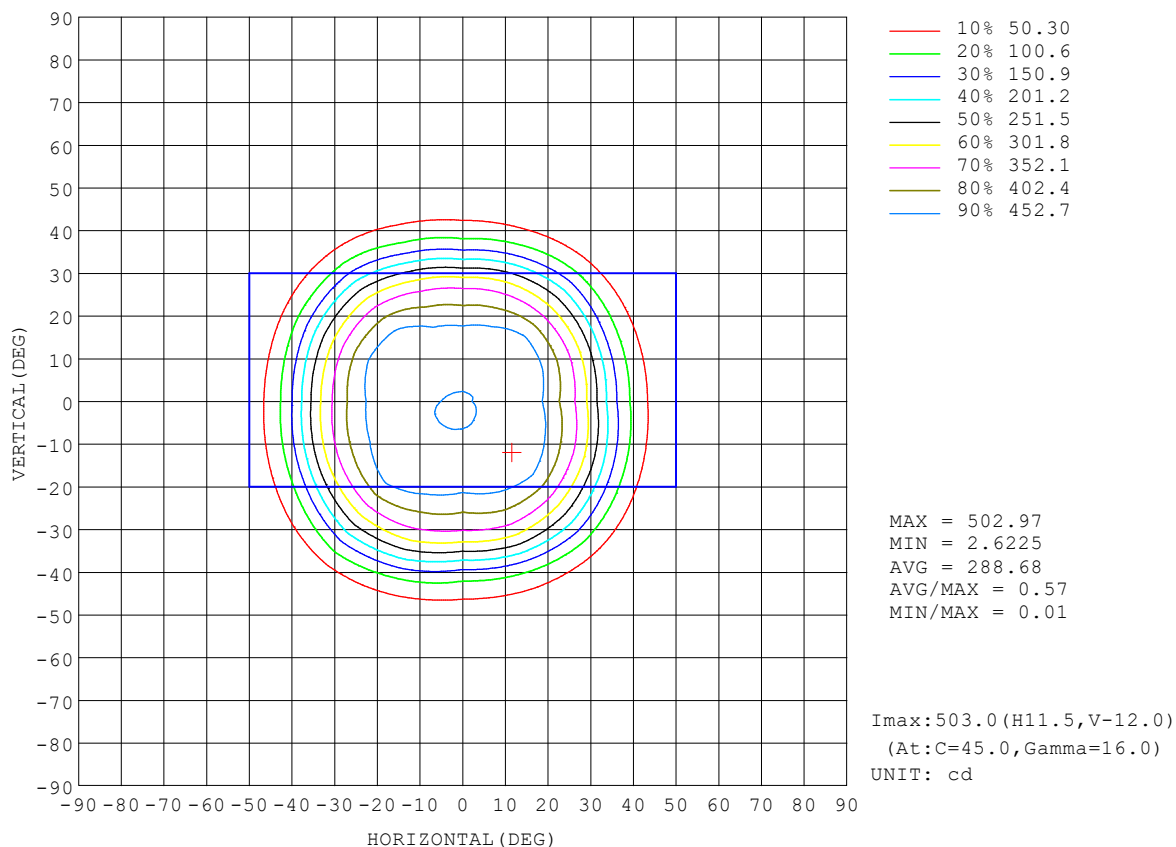
REFLECTANCE										
Ceiling	0.8	0.8	0.8	0.7	0.7	0.7	0.5	0.5	0.5	0
Walls	0.7	0.5	0.3	0.7	0.5	0.3	0.7	0.5	0.3	0
Working plane	0.2	0.2	0.2	0.2	0.2	0.2	0.2	0.2	0.2	0
ROOM INDEX	UTILIZATION FACTORS (PERCENT) $k(RI) \times RCR = 5$									
$k = 0.60$	85	78	74	84	78	74	84	78	74	70
0.80	93	87	83	92	86	83	91	86	82	78
1.00	98	92	88	97	91	88	95	91	87	83
1.25	102	97	93	101	96	93	99	95	92	87
1.50	105	100	97	104	99	96	101	98	95	90
2.00	108	104	100	106	102	99	104	100	98	92
2.50	110	106	103	108	104	102	105	102	100	93
3.00	111	108	105	109	106	104	106	103	101	95
4.00	113	110	108	111	109	107	107	105	104	96
5.00	115	112	110	112	110	109	108	107	105	97
ROOM INDEX	UF (total)									Direct
According to DIN EN 13032-2 2004			Suspended					SHRNOM = 1.25		

C Range: 0 - 360DEG  
C Interval: 22.5DEG  
Test Speed: HIGH  
Temperature: 25.3 °C  
Operators: 001  
Test Date: 2025-04-25

γ Range: 0 - 180DEG  
γ Interval: 2.0DEG  
Test System: EVERFINE GO-2000B\_V1 SYSTEM V2.00.456  
Humidity: 65.0%  
Test Distance: 8.370m [K=1.0000]  
Remarks:

## ISOCANDELA DIAGRAM

Test:U:220.75V I:0.0488A P:7.9773W PF:0.7406 Freq:49.99Hz UTHDi:0.00% ITHDi:0.00% KDisp:0 Lamp Flux:570.41x1 lm		
NAME: DL6104 3000K RA90 80D	TYPE:	WEIGHT:
SPEC.:	DIM.:	SERIAL No.:
MFR.: VJC lighting	SUR.: 29*29*4	Shielding Angle:



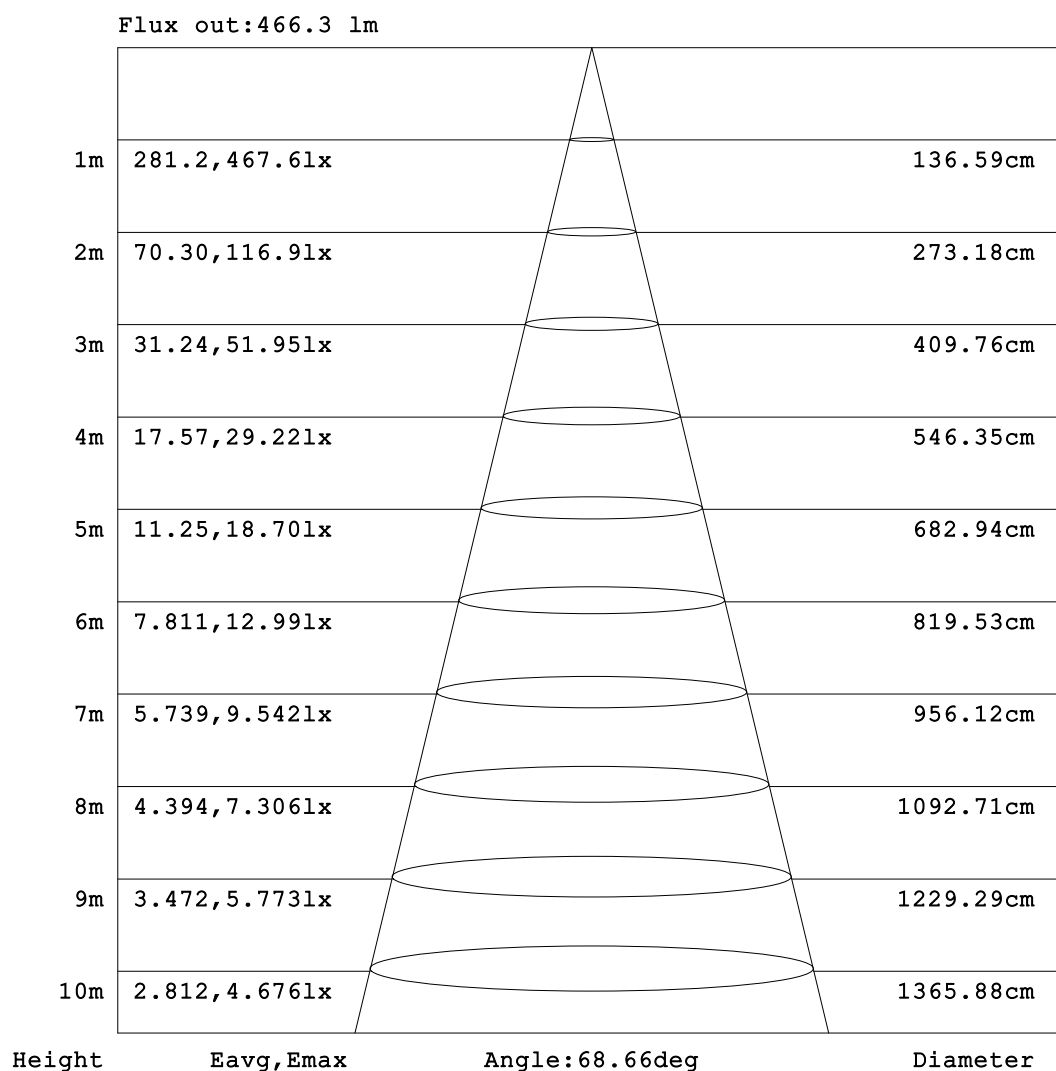
C Range: 0 - 360DEG  
C Interval: 22.5DEG  
Test Speed: HIGH  
Temperature:25.3℃  
Operators:001  
Test Date:2025-04-25

γ Range: 0 - 180DEG  
γ Interval: 2.0DEG  
Test System:EVERFINE GO-2000B\_V1 SYSTEM V2.00.456  
Humidity:65.0%  
Test Distance:8.370m [K=1.0000]  
Remarks:



### AAI Figure

Test:U:220.75V I:0.0488A P:7.9773W PF:0.7406 Freq:49.99Hz UTHDi:0.00% ITHDi:0.00% KDisp:0 Lamp Flux:570.41x1 lm		
NAME: DL6104 3000K RA90 80D	TYPE:	WEIGHT:
SPEC.:	DIM.:	SERIAL No.:
MFR.: VJC lighting	SUR.: 29*29*4	Shielding Angle:



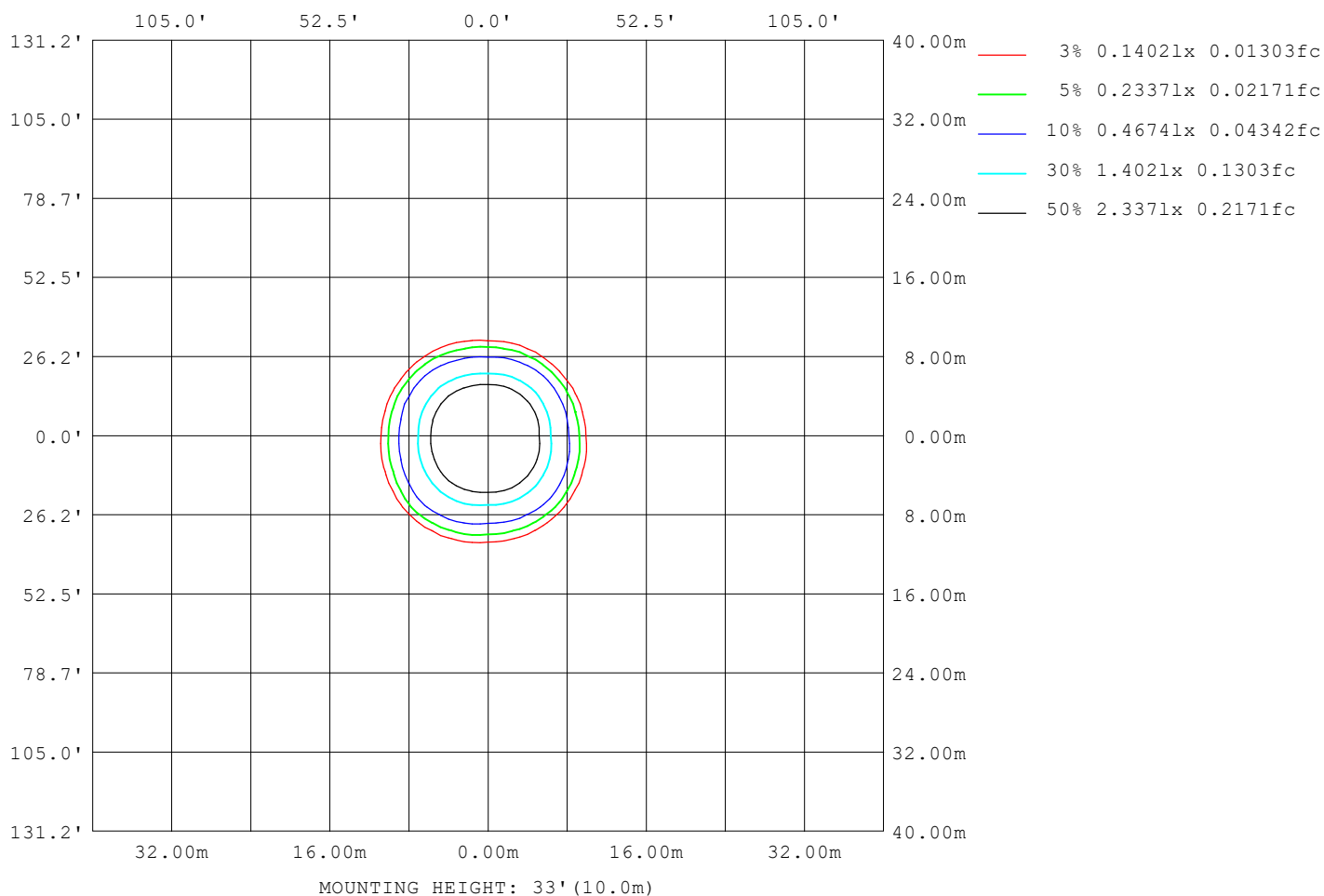
Note:The Curves indicate the illuminated area and the average illumination when the luminaire is at different distance.

C Range: 0 - 360DEG  
C Interval: 22.5DEG  
Test Speed: HIGH  
Temperature:25.3℃  
Operators:001  
Test Date:2025-04-25

γ Range: 0 - 180DEG  
γ Interval: 2.0DEG  
Test System:EVERFINE GO-2000B\_V1 SYSTEM V2.00.456  
Humidity:65.0%  
Test Distance:8.370m [K=1.0000]  
Remarks:

## ISOLUX DIAGRAM

Test:U:220.75V I:0.0488A P:7.9773W PF:0.7406 Freq:49.99Hz UTHDi:0.00% ITHDi:0.00% KDisp:0 Lamp Flux:570.41x1 lm		
NAME: DL6104 3000K RA90 80D	TYPE:	WEIGHT:
SPEC.:	DIM.:	SERIAL No.:
MFR.: VJC lighting	SUR.: 29*29*4	Shielding Angle:



C Range: 0 - 360DEG  
C Interval: 22.5DEG  
Test Speed: HIGH  
Temperature: 25.3°C  
Operators: 001  
Test Date: 2025-04-25

γ Range: 0 - 180DEG  
γ Interval: 2.0DEG  
Test System: EVERFINE GO-2000B\_V1 SYSTEM V2.00.456  
Humidity: 65.0%  
Test Distance: 8.370m [K=1.0000]  
Remarks:

## LED Avg.L Report

Test:U:220.75V I:0.0488A P:7.9773W PF:0.7406 Freq:49.99Hz UTHDi:0.00% ITHDi:0.00% KDisp:0 Lamp Flux:570.41x1 lm		
NAME: DL6104 3000K RA90 80D	TYPE:	WEIGHT:
SPEC.:	DIM.:	SERIAL No.:
MFR.: VJC lighting	SUR.: 29*29*4	Shielding Angle:

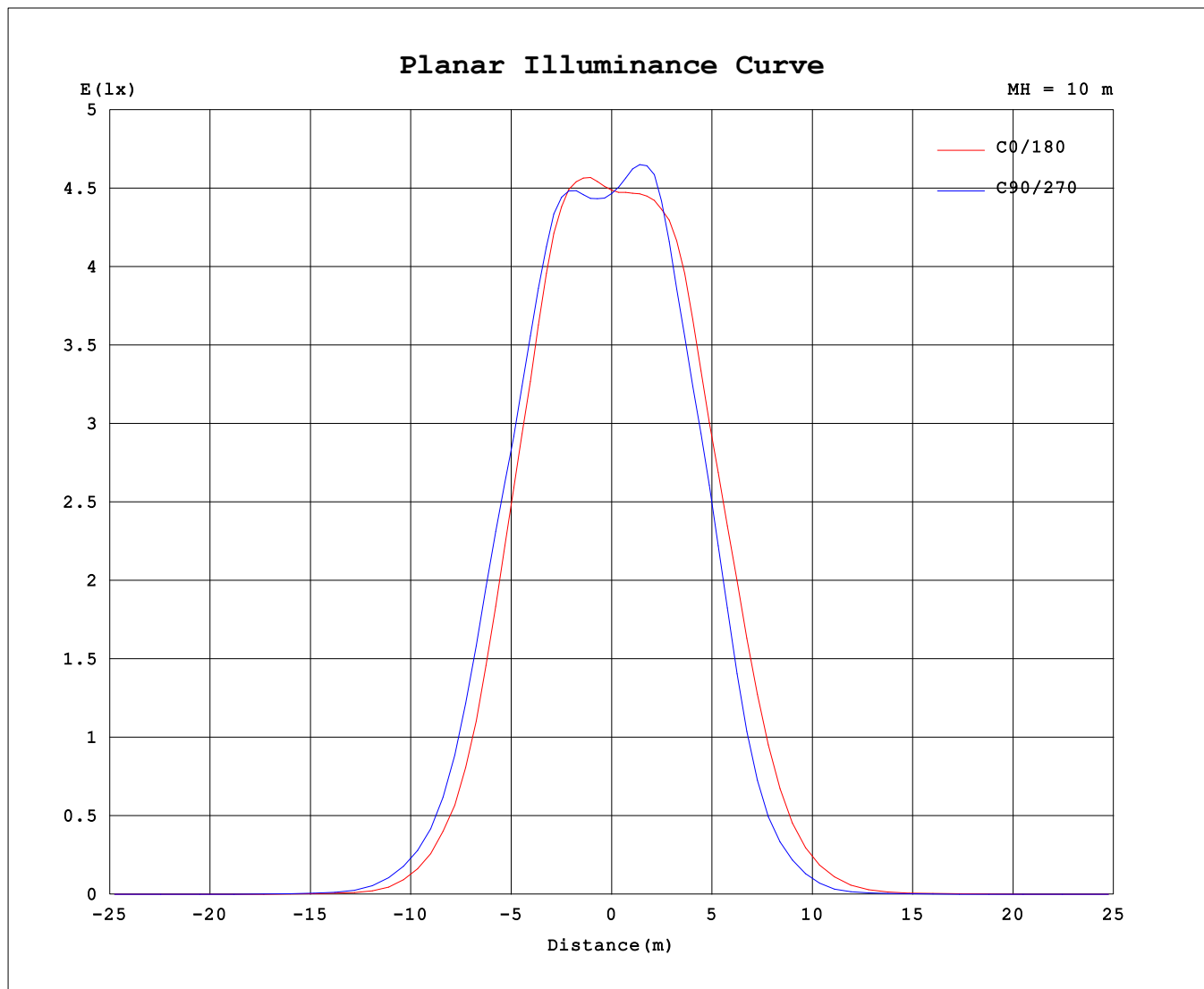
AvgL	cd/m2
L_0~180 (65) av	718
L_0~180 (75) av	504
L_0~180 (85) av	180
L_90~270 (65) av	626
L_90~270 (75) av	446
L_90~270 (85) av	228
L_45 (65) av	804
L_45 (75) av	418
L_45 (85) av	208

Standard: GB/T 29293-2012

C Range: 0 - 360DEG  
C Interval: 22.5DEG  
Test Speed: HIGH  
Temperature:25.3℃  
Operators:001  
Test Date:2025-04-25

γ Range: 0 - 180DEG  
γ Interval: 2.0DEG  
Test System:EVERFINE GO-2000B\_V1 SYSTEM V2.00.456  
Humidity:65.0%  
Test Distance:8.370m [K=1.0000]  
Remarks:

## Planar Illuminance Curve



C Range: 0 - 360DEG  
C Interval: 22.5DEG  
Test Speed: HIGH  
Temperature: 25.3 °C  
Operators: 001  
Test Date: 2025-04-25

$\gamma$  Range: 0 - 180DEG  
 $\gamma$  Interval: 2.0DEG  
Test System: EVERFINE GO-2000B\_V1 SYSTEM V2.00.456  
Humidity: 65.0%  
Test Distance: 8.370m [K=1.0000]  
Remarks:

## LUMINOUS DISTRIBUTION INTENSITY DATA

Test:U:220.75V I:0.0488A P:7.9773W PF:0.7406 Freq:49.99Hz		
UTHDi:0.00% ITHDi:0.00% KDisp:0 Lamp Flux:570.41x1 lm		
NAME: DL6104 3000K RA90 80D	TYPE:	WEIGHT:
SPEC.:	DIM.:	SERIAL No.:
MFR.: VJC lighting	SUR.: 29*29*4	Shielding Angle:

Table--1

UNIT: cd

C (DEG) γ (DEG)	0	22.5	45	67.5	90	112.5	135	157.5	180	202.5	225	247.5	270	292.5	315	337.5			
0	447	447	447	447	447	447	447	447	447	447	447	447	447	447	447	447			
5	456	453	451	449	447	446	446	448	449	452	456	459	460	461	460	458			
10	474	473	475	472	470	466	462	461	464	473	481	485	487	490	490	481			
15	478	485	496	493	487	486	481	474	476	492	498	489	484	495	502	491			
20	436	462	493	478	466	483	502	479	475	489	479	441	429	441	466	456			
25	384	414	447	440	426	447	478	450	436	452	439	398	386	393	408	403			
30	282	322	352	364	357	376	396	381	360	363	349	307	281	294	300	295			
35	193	239	274	290	278	314	325	310	285	285	270	215	182	201	216	204			
40	89.2	114	146	146	138	181	203	175	149	152	134	88.9	74.6	82.4	90.4	89.6			
45	43.7	56.5	73.6	74.7	75.4	96.1	117	93.1	79.8	80.2	63.5	46.3	35.7	36.7	38.6	41.4			
50	8.53	14.7	17.9	23.4	21.1	30.5	32.4	29.2	22.5	19.8	15.8	10.9	6.67	7.57	8.71	9.68			
55	3.87	5.08	6.84	7.96	6.40	10.4	11.7	10.4	7.39	7.15	6.20	4.13	3.59	3.48	3.82	3.73			
60	1.34	1.86	2.33	2.44	2.48	2.95	3.43	3.21	2.97	2.68	2.33	1.70	1.35	1.44	1.56	1.32			
65	0.79	0.87	1.29	1.24	1.18	1.60	1.92	1.72	1.53	1.43	1.30	0.93	0.85	0.81	0.83	0.76			
70	0.50	0.49	0.53	0.57	0.63	0.62	0.78	0.83	0.88	0.75	0.59	0.61	0.55	0.53	0.42	0.48			
75	0.33	0.33	0.38	0.43	0.48	0.47	0.52	0.62	0.64	0.54	0.42	0.43	0.38	0.37	0.28	0.32			
80	0.12	0.13	0.20	0.23	0.27	0.27	0.30	0.31	0.32	0.26	0.19	0.20	0.15	0.15	0.09	0.11			
85	0.03	0.02	0.09	0.11	0.15	0.15	0.18	0.14	0.14	0.10	0.06	0.07	0.02	0.02	0.00	0.00			
90	0.00	0.00	0.00	0.00	0.01	0.00	0.02	0.00	0.00	0.00	0.00	0.00	0.00	0.00	0.00	0.00			
95	0.00	0.00	0.00	0.00	0.00	0.00	0.00	0.00	0.00	0.00	0.00	0.00	0.00	0.00	0.00	0.00			
100	0.00	0.01	0.00	0.00	0.00	0.00	0.00	0.00	0.00	0.00	0.00	0.00	0.01	0.00	0.02	0.00			
105	0.03	0.05	0.01	0.02	0.00	0.01	0.00	0.02	0.02	0.00	0.04	0.02	0.05	0.04	0.08	0.05			
110	0.17	0.18	0.12	0.11	0.06	0.10	0.07	0.11	0.10	0.09	0.15	0.14	0.18	0.17	0.22	0.19			
115	0.31	0.30	0.23	0.22	0.16	0.19	0.17	0.21	0.20	0.20	0.27	0.27	0.31	0.31	0.36	0.32			
120	0.56	0.54	0.46	0.43	0.37	0.40	0.38	0.42	0.40	0.42	0.50	0.51	0.56	0.57	0.61	0.58			
125	0.76	0.73	0.65	0.61	0.55	0.57	0.55	0.59	0.59	0.60	0.68	0.70	0.76	0.77	0.81	0.78			
130	1.09	1.04	0.95	0.93	0.87	0.88	0.85	0.91	0.91	0.92	0.98	1.02	1.09	1.10	1.12	1.10			
135	1.31	1.26	1.17	1.15	1.09	1.08	1.05	1.12	1.13	1.14	1.20	1.24	1.32	1.33	1.34	1.32			
140	1.62	1.57	1.48	1.48	1.43	1.41	1.39	1.46	1.47	1.48	1.53	1.56	1.65	1.64	1.65	1.62			
145	1.80	1.75	1.68	1.70	1.64	1.62	1.59	1.67	1.69	1.69	1.74	1.76	1.85	1.83	1.84	1.81			
150	2.05	2.00	1.94	1.96	1.92	1.90	1.86	1.94	1.96	1.95	2.01	2.03	2.11	2.09	2.09	2.05			
155	2.19	2.15	2.09	2.12	2.09	2.07	2.02	2.09	2.12	2.10	2.15	2.19	2.27	2.24	2.23	2.18			
160	2.38	2.36	2.31	2.34	2.29	2.27	2.23	2.31	2.32	2.31	2.36	2.39	2.46	2.45	2.44	2.39			
165	2.54	2.52	2.47	2.48	2.43	2.43	2.40	2.46	2.46	2.47	2.52	2.55	2.62	2.61	2.61	2.57			
170	2.81	2.81	2.74	2.76	2.72	2.73	2.72	2.77	2.74	2.76	2.81	2.80	2.87	2.87	2.89	2.87			
175	2.97	2.97	2.93	2.95	2.90	2.94	2.93	2.98	2.92	2.94	2.99	2.97	3.01	3.01	3.06	3.03			
180	3.08	3.09	3.10	3.10	3.10	3.11	3.13	3.14	3.08	3.08	3.10	3.08	3.11	3.11	3.14	3.13			

C Range: 0 - 360DEG

C Interval: 22.5DEG

Test Speed: HIGH

Temperature:25.3℃

Operators:001

Test Date:2025-04-25

γ Range: 0 - 180DEG

γ Interval: 2.0DEG

Test System:EVERFINE GO-2000B\_V1 SYSTEM V2.00.456

Humidity:65.0%

Test Distance:8.370m [K=1.0000]

Remarks: